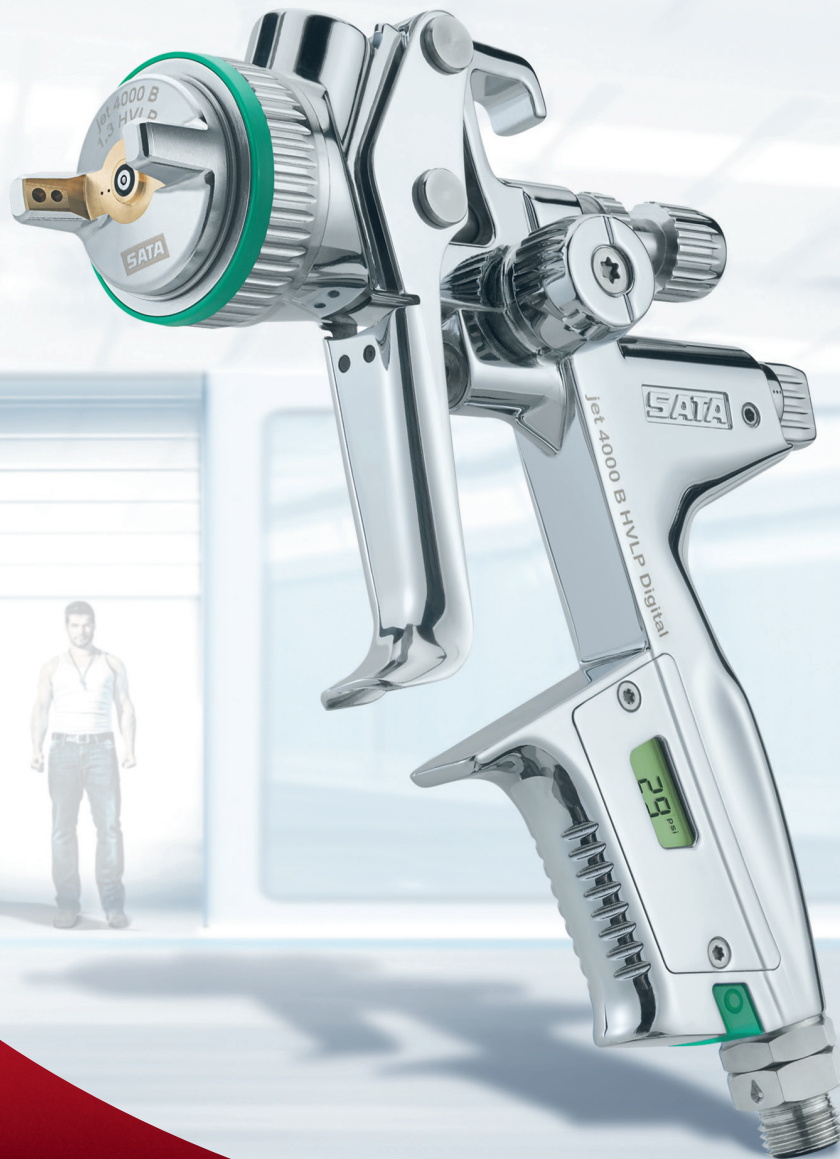


# SATAjet® 4000 B



Spray Guns | Cup Systems | Breathing Protection | Air Filtration | Accessories



## Made for the Best

# The Experience in Form and Function – The SATAjet® 4000 B

The new SATAjet4000 B is setting the standards. Featuring state-of-the-art technology, the spray gun has been optimized with the passion for precision so typical of SATA as well as undergoing intensive practical tests. The result: a soft spray pattern which is second to none, perfect ergonomics and outstanding atomization for excellent finishes.

### Improved ergonomics, lighter, higher precision.

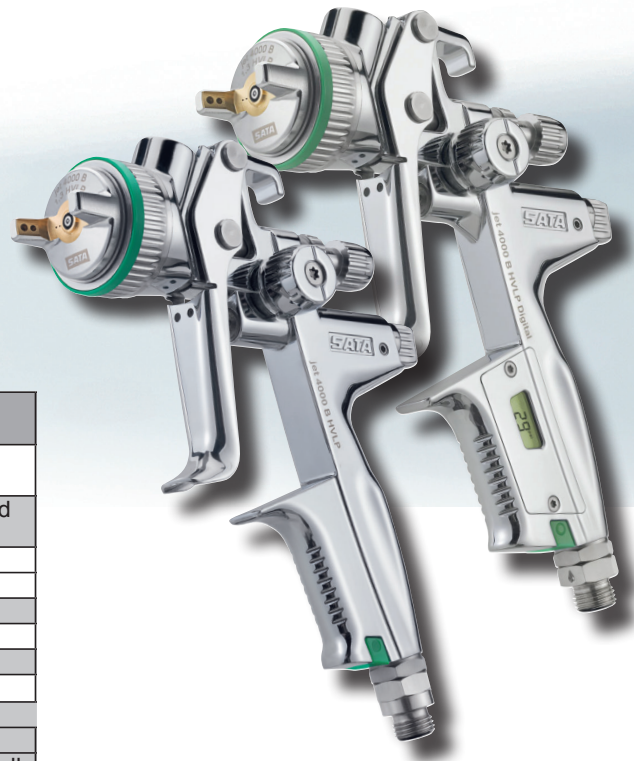
SATAjet 4000 B, due to its ergonomically formed gun handle, fits like a glove. We have reduced its weight by 15% compared to the previous model. In addition, we have lowered the centre of gravity of the spray gun by a great deal for the benefit of the painter.

### Improved control elements.

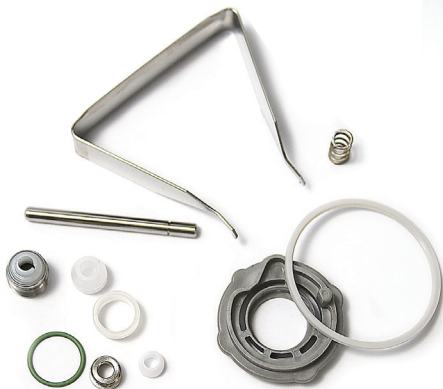
With just a quarter turn of the round/flat spray control, the spray fan can be precisely adapted to the shape of the object. For safer and even more comfortable paint application.

### Softer: the nozzle concept

The nozzle concept of the SATAjet 4000 B has been enhanced to meet the requirements of modern paint systems. Providing a uniform and perfectly shaped spray fan, the material lays down softly and evenly. The noise level has been reduced by up to 50%. Highest color match precision, high gloss and uniform paint distribution ensure brilliant finishes at rapid application speed.



### SATAjet® 4000B Maintenance Set #1047837



Art. No.	Description
172429	Sealing ring for air cap ring
140582	Sealing element for fluid tip
165951	Air distribution ring Extraction tool
86843	Air piston rod
133942	Seal retainer
133934	Spindle seal
133991	Air piston head
15438	<b>Paint needle packing</b> Seal Pressure spring for needle seal Compression screw



A perfect form – the SATAjet 4000 B fits like a glove.



A soft spray fan – the SATAjet 4000 B lends itself perfectly for even challenging contours.



The pressure always under control – the DIGITAL® option: Integrated pressure gauge and pressure adjustment – essential for exact color match.

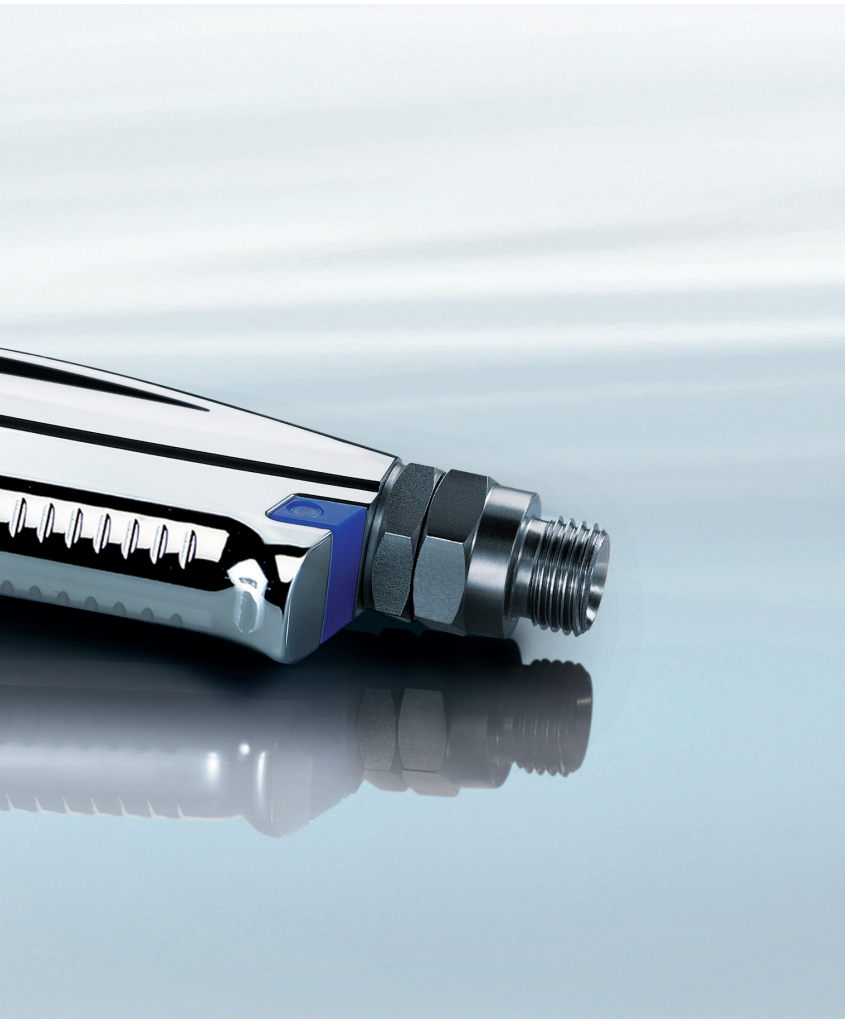
**Technical Data**

Weight: (w/o cup) .....DIG: 16.84 oz. / Std: 16 oz.  
 Max. Operating Pressure: .....HVLP 29 psi      RP 32 psi  
 Air Consumption: .....HVLP 15.2 cfm      RP 10 cfm  
 Spray Distance: .....HVLP 5"- 7"      RP 62"- 82"  
 Finish: .....High Gloss Chrome

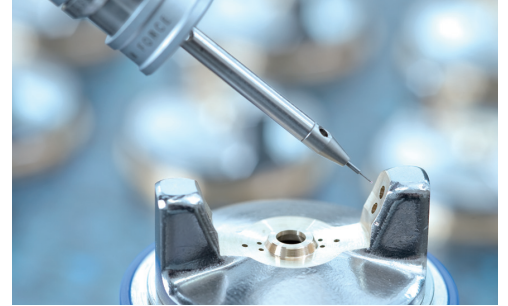




Without adapter – SATA RPS multipurpose cups fit directly on the SATAjet 4000 B and thus reduce weight as well as cleaning effort.



## German Engineering – exceeding expectations:



**Quality assurance:** SATA spray guns are exclusively developed and manufactured in Germany. Strict quality controls are in place to monitor each manufacturing process.



**Final assembly:** The high precision components are assembled with ultimate care.



**Manual adjustment:** Each nozzle set is manually "tuned" in order to ensure an optimum spray pattern.



**100% spray pattern check:** This results in a perfect spray pattern meeting highest quality expectations.

# The SATAjet 4000 B, perfect in every detail

Robust air cap made of chrome-plated brass with new QC™ air cap thread for quick change with one turn only.



**QCC™** – Quick Cup Connector. Bayonet cup connection. Ensures quick and clean cup changes as well as easy cleaning.



Fluid tip and paint needle made of corrosion-resistant stainless steel.

Fluid tip sealing ensuring minimal cleaning effort and safe color change.

Low maintenance, self-tensioning air piston and paint needle packings.

Gun trigger with paint needle cover ensuring increased life time of the paint needle packing.

**Option:** digital pressure display for perfect color match.

Easy clean corrosion-resistant chrome gun surface.

**CCS™** – Color Code System. For the convenient identification of your spray gun.



Gun suspension hook for convenient storage.

Control elements can be perfectly adjusted even wearing gloves. Improved profile of the material flow control with good grip.

Air micrometer for the adjustment of the atomization air. Highest precision with digital pressure gauge (optional).

Easy to adjust round/flat control: **Quarter turn**. Switching back and forth from round to flat spray fan with a quarter turn only.



Ergonomically shaped gun handle.

Special internal nickel plating

**Warranty.** Top quality is not enough – we guarantee it: for three years!



**HVLP | RP**

Air cap ring:  
green = HVLP technology  
blue = RP technology

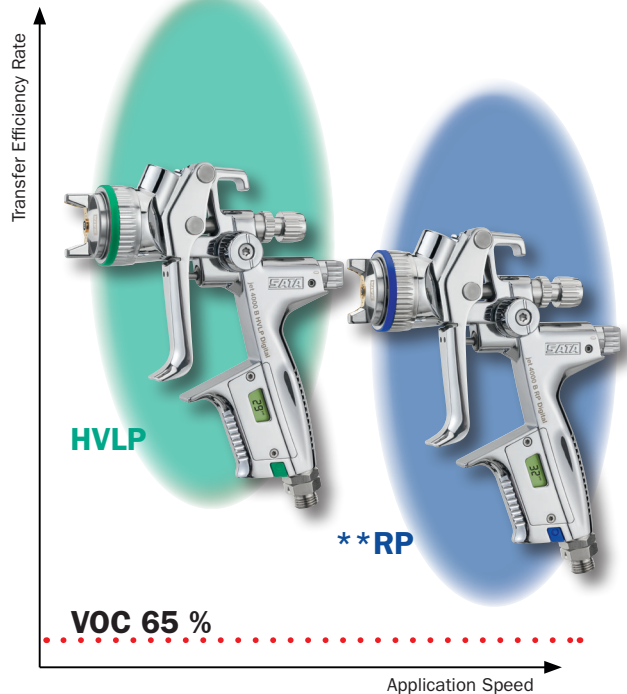


## Two Ways to Achieve Perfect Results: HVLP and RP®.

The "Super Saver" SATAjet 4000 B HVLP achieves particularly high transfer efficiency rates, due to its low pressure technology.

The "Super Speed" SATAjet 4000 B RP with its optimized high pressure technology for maximum application speed and minimum overspray.

Both versions meet highest requirements for mirror finishes, while far exceeding 65% transfer efficiency rates in accordance with VOC legislation.



\*\* Check local regulations for use of the SATAjet 4000 B RP. The SATAjet 4000 B RP meets requirements for EPA Rule 40, part 63, subpart HHHHHH. RP approvals in HVLP mandated areas are located on the SATA web site: [www.satausa.com](http://www.satausa.com)

# Superior in All Fields of Application – SATAjet 4000 B

With the SATAjet 4000 B, you can achieve perfect finishes with all available paint systems: Whether it be in car refinishing, commercial transportation, coating furniture, marine yachts or high quality industrial components.

Whether for basecoat, clear coat or single stage material, please ask your SATA dealer or consult our website for the correct nozzle size: [www.sata.com/SATAjet4000B](http://www.sata.com/SATAjet4000B)

Nozzle size	HVLP	1.0	-	1.2	WSB	1.3	1.3 C	HC+	1.4	1.5	1.7	1.9	2.2
	RP	1.0	1.1	1.2	1.2 W	1.3	-	-	1.4	1.6	1.8	2.0	2.5
Standard Cpl. with 1 ea. RPS multipurpose cup, 0.3 l / 0.6 l / 0.9 l	176891	-	170159	170167	170175	170183	204230	170209	190696	176917	176941	176958	
	176974	171520	169979	169987	169995	-	-	170001	176990	177014	177030	177055	
DIGITAL Cpl. with 1 ea. RPS multipurpose cup 0.3 l / 0.6 l / 0.9 l	176909	-	166249	170357	170365	170373	204354	170399	170704	176925	176933	176966	
	16982	171553	170019	170027	170035	-	-	170050	177006	166744	177048	177063	
Nozzle set	166926	-	166934	166983	166942	166959	200253	166967	166975	168658	168666	168674	
	166991	167007	167015	167023	167049	-	-	167056	167072	167080	168625	168633	
Test Air-Cap	171355	-	171355	171355	171348	171348	171348	171348	171348	CALL	CALL	CALL	

\* Check local regulations for use of the SATAjet 4000 B RP. The SATAjet 4000 B RP meets requirements for EPA Rule 40, part 63, subpart HHHHHH. RP approvals in HVLP mandated areas are located on the SATA web site: [www.satausa.com](http://www.satausa.com)

## Accessories:

### SATA® adam® 2



Retrofit digital air micrometer to upgrade all SATA spray guns without integrated digital pressure gauge. The same display can be used on several guns with pre-fitted SATA adam 2 docks. Easy to remove prior to gun cleaning.

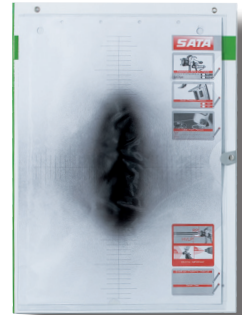


Part No. 160853

### SATA® cert™

Prevent rework before it occurs—with SATA cert, the quality assurance system for your paint shop.

Part No. 161596



### SATA® RPS™

Replaces reusable plastic cups and fits directly on the spray guns without adapter. Reduces cleaning effort and helps save solvents. Available sizes: 0.3 l, 0.6 l and 0.9 l



### SATA® care set™

The practical tool bag for gun cleaning and maintenance utensils. (not all tools pictured are included)

Part No. 162628



Further useful accessories like air hoses, breathing protection equipment, compressed air filters etc. are available from your SATA dealer.

Your SATA dealer:



**DanAm®**

The exclusive independent distributor of SATA product in the US and Puerto Rico

One SATA Drive  
Spring Valley, MN 55975  
Phone: 800-533-8016  
Fax: 800-633-7282  
e-mail: [satajet@satausa.com](mailto:satajet@satausa.com)  
[www.satausa.com](http://www.satausa.com)